

# **2025 AUSTRALIAN WOMEN'S MATCH RACING CHAMPIONSHIPS**

**9-12, SEPTEMBER 2025**

**Fremantle Sailing Club, Western Australia**

## **NOTICE OF RACE**

**Organising Authority**



**Fremantle Sailing Club (FSC)**

**In conjunction with**



**Australian Sailing (AS)**

# Amendments to Notice of Race

Changes to this document are marked in RED

No:	Description	Posted
1	Changed EOI from email address to Website form found at <a href="https://www.awmatchracing.com/">https://www.awmatchracing.com/</a>	20/3/2025
2	Added Australian Sailing Logo to cover	8/5/2025
3	Practice Session included in program	12/6/2025
4	Damage Deposit Changed	4/8/2025

# **Australian Women's Match Racing Championship 2025**

**Fremantle Sailing Club (FSC) - Organising Authority**

**In conjunction with Australian Sailing (AS)**

**9-12 September 2025**

**Fremantle, Western Australia**

## **Notice of Race**

The following abbreviations apply to this Notice of Race and the Sailing Instructions:

PC: Protest Committee or International Jury

NoR: Notice of Race

OA: Organising Authority

RRS: Racing Rules of Sailing

SI: Sailing Instruction

RC: Race Committee

TD: Technical Delegate

[NP]: A boat may not protest as per NoR 1.3

### **1 RULES**

- 1.1 The event is governed by the rules as defined in *The Racing Rules of Sailing*, including RRS Appendix C
- 1.2 The rules for the handling of boats and the equipment list, detailed as part of the Sailing Instructions, will apply, and will also apply to any practice sailing and sponsor races. Class rules will not apply.
- 1.3 The notation '[NP]' in a rule of the Notice of Race or Sailing Instructions means that a boat may not protest another boat for breaking that rule. This changes RRS 60.1.
- 1.4 RRS 40.1 (personal flotation devices) applies at all times whilst afloat, except briefly while changing or adjusting clothing or personal equipment.
- 1.5 The event grading applied for is World Sailing Grade 3. This grading is subject to review by World Sailing. The event may be re-graded when there is clear reason to do so.

### **2 SAILING INSTRUCTIONS**

- 2.1 The SI's will be available after 1400hrs on 08/09/24 at <https://www.awmatchracing.com/>.

### **3 COMMUNICATION**

- 3.1 Notices to competitors will be posted on the online official notice board which is located at <https://www.awmatchracing.com/>
- 3.2 Signals made ashore will be displayed from main flagpole (VIP Jetty lawn).

### **4 ELIGIBILITY AND ENTRY**

- 4.1 Up to 12 female skippers will be invited. Only skippers invited by the OA will be eligible to enter this event. Skippers wishing to receive an invite may register their request with the OA using the Website form found at <https://www.awmatchracing.com/> on or before Friday 01 August 2025.
- 4.2 Only skippers invited by the OA, and who confirm acceptance of the invitation, as detailed in the letter of invitation, will be eligible to enter this event.
- 4.3 International competitors and/or crews are eligible to compete at the absolute discretion of Australian Sailing. International competitors or crews however, will not be eligible for the Australian Champion title or prizes.
- 4.4 Applications will have their entry confirmed by Friday 08 August 2025.
- 4.5 All competitors shall be over the age of 14 on or before 9 September 2025. Proof of age shall be submitted to FSC no later than close of registration.
- 4.6 All competitors shall inform the OA of their World Sailing Sailor ID prior to or at registration. Registering online can be done at <https://member.sailing.org/>
- 4.7 The skipper shall be entered in the event upon completion of all registration requirements which includes valid credit card details to cover the damage deposit of \$3000AUD at registration, and payment of a \$1100AUD non-refundable entry fee as per the letter of invitation by 0830 on Wednesday, 20 August 2025 unless extended by the OA.
- 4.8 All competitors shall ensure that all crew complete weighing is completed by 0830 on Wednesday 10 September 2025.
- 4.9 When a skipper accepts an invitation and later withdraws within two months of the event or leaves the event before the end without written approval from the OA, a zero score may be applied to their Ranking points for that event by World Sailing. (World Sailing Regulation 27.2.2(d))

### **5 DAMAGE / DAMAGE DEPOSIT**

- 5.1 Valid credit card details to cover the damage deposit of \$3000AUD shall be received by the OA at registration, unless extended by the OA. This deposit is the maximum payable by the skipper as a result of any one incident.
- 5.2 Each skipper is responsible for the damage or loss to their boat unless responsibility is otherwise assigned by the OA. When damage occurs, the OA maintenance team will record the damage, umpire decision and skipper sailing the boat at the time. Further inspection may take place at the completion of racing for the day.

- 5.3 Each boat is insured by the OA for 3<sup>rd</sup> Party liability insurance. It is recommended that each entrant and crew member have appropriate personal medical and liability insurance.
- 5.4 The OA will refund any remaining damage deposit within 10 days after the event.

## **6 CREW (INCLUDING SKIPPER)**

- 6.1 All skippers and crew shall be female. The number of crew (including the skipper) shall be four (4) or (five) 5. All registered crew shall sail all races.
- 6.2 After the warning signal for a match, the registered skipper shall not leave the helm, except in an emergency.
- 6.3 When a registered skipper is unable to continue in the event, the OA may authorise an original crew member to substitute.
- 6.4 When a registered crew member is unable to continue in the event, the OA may authorise a substitute, a temporary substitute or other adjustment.
- 6.5 The total weight of the crew, including the skipper, dressed in at least shorts and shirts, shall not exceed 340 kg, determined at the time of registration or such time as required by the RC
- 6.6 Crew weight may be checked during the regatta. When crew weight was checked prior to racing, at any re-weighing the total weight limit is increased by 10kg.
- Any crew weighing in excess of this limit shall not be penalised but they shall reduce their weight to the increased weight limit before racing again.

## **7 EVENT FORMAT**

- 7.1 The OA intends to provide 6 (six) Elliott 7 type boats for racing in the event. Each boat will have the following sails: Mainsail, Jib, Spinnaker.
- 7.2 Boats will be allocated by draw at each stage as decided by the RC.
- 7.3 While all reasonable steps are taken to equalise the boats variations will not be grounds for redress. This changes RRS 61.
- 7.4 Skippers will be seeded into a round robin as determined by the open match racing rankings updated August 2025. Unranked skippers will seeded in order of date of entry behind the ranked skippers.
- 7.5 The number of matches to be sailed each day will be determined by the RC with the intention of the RC to start each subsequent flight as soon as practicable after the previous flight.

7.6 The event will consist of the following stages:

**a) First Stage – Round Robins**

- 1) All skippers will sail a double round robin.
- 2) The four highest-scoring skippers shall qualify for the next stage.

**b) Second Stage – Knock-Out Semi-Finals**

- 1) The skipper finishing first in Stage One shall select his opponent when requested by the RC to do so. The remaining two skippers shall race each other.
- 2) The first skipper of each series to score at least 2 points shall proceed to the Fourth Stage, the losing skippers shall proceed to the Third Stage.

**c) Third Stage – Knock-Out Third and Fourth Place**

- 1) The losing semi-finalists shall race to determine third and fourth place.
- 2) The first skipper to score at least 2 points shall be awarded third place, and the losing skipper awarded fourth place.

**d) Fourth Stage – Knock-Out Final**

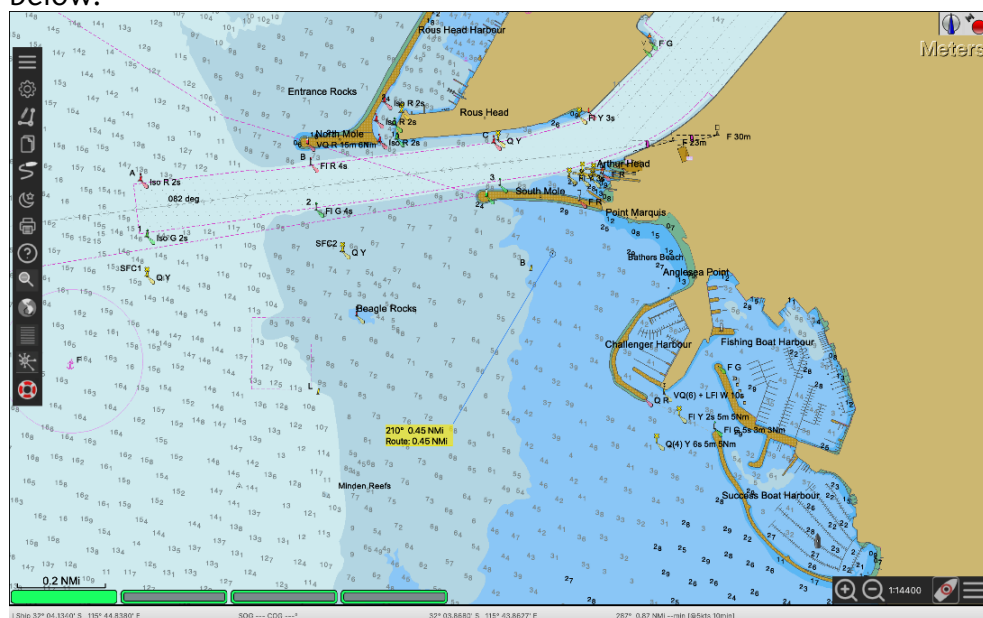
- 1) The first skipper to score at least 3 points shall be awarded first place, and the losing skipper awarded second place.

7.8 The RC may change the format, terminate any stage or the event when, in its opinion, it is impractical to attempt to hold the remainder of matches under the existing conditions or in the remaining time scheduled. Early stages may be terminated in favour of later stages.

## 8 COURSE

8.1 The course will be windward/leeward with starboard rounding, finishing downwind.

8.2 The intended racing area will be off Bathers Beach, Fremantle and is shown below.



## **9 PROVISIONAL PROGRAMME**

### **9.1 Schedule:**

Tue 9 September 2025	0800-1630	Regatta Office Open Registration and crew weigh in
	1000-1600	On Water Practice
10, 11, 12 Sept 2025	0730-0830	Registration and crew weigh in
	0830	Daily Briefing
	0953 or later	First Warning Signal
	End of day's racing	Debrief and boat draw
Fri 12 September 2025	1700	Latest time for warning signal
	1800 approx.	Prize Giving

9.2 Unless excused by the OA, attendance at the following is mandatory:

- (a) Registration and weighing.
- (b) Daily briefing and debrief for skippers.
- (c) Prize giving for the final skippers and crews.

## **10 ADVERTISING**

10.1 [NP] Boats shall display advertising chosen and supplied by the organizing authority.

10.2 Boats shall not be permitted the right to protest for breaches of any rules regarding advertising (this amends RRS60.1).

10.3 The OA reserves the absolute right to require any competitor to remove any advertising displayed by competitors clothing, boats, or equipment (while racing or attending official functions) within the boundary of the event venue which may be in contravention of moral decency or government regulation.

## **11 [NP] CODE OF CONDUCT**

11.1 Competitors and Support Persons shall comply with any reasonable request from any official, including attendance at official functions, co-operation with event sponsors and shall behave so to not bring the event into disrepute.

## **12 [NP] SUPPORT PERSON**

12.1 Support person vessels shall conspicuously display identification of the team being coached.

- 12.2 Support persons shall stay approximately 100m from the racing area while boats are racing and comply with reasonable requests from the officials.
- 12.3 Any interference by a Support Person with the racing or event organisation may result in a penalty applied at the discretion of the PC to the appropriate skipper or team
- 12.4 Support vessels are to comply with Addendum A

### **13 [NP] MEDIA, IMAGES, and SOUND**

- 13.1 If required by the OA, recording equipment shall be located on boats during racing.
- 13.2 Competitors shall not interfere with the normal working of the OA supplied media equipment.
- 13.3 By participating in the event, a competitor automatically grants to the OA and the sponsors of the event, the right in perpetuity, to make, use and show, from time to time and at the discretion, any motion pictures, still pictures and live, taped or film television and other reproductions of the competitor during the period of the competition for said event in which the competitor participated and in all material related to the said event without compensation.

### **14 RISK STATEMENT**

RRS 3 states: 'The responsibility for a boat's decision to participate in a race or to continue racing is hers alone.' By participating in this event each competitor agrees and acknowledges that sailing is a potentially dangerous activity with inherent risks. These risks include strong winds and rough seas, sudden changes in weather, failure of equipment, boat handling errors, poor seamanship by other boats, loss of balance on an unstable platform and fatigue resulting in increased risk of injury. **Inherent in the sport of sailing is the risk of permanent, catastrophic injury or death by drowning, trauma, hypothermia or other causes.**

### **15 PRIZES**

- 15.1 Prizes will be given as follows:  
Australian Sailing Medals for 1<sup>st</sup>, 2<sup>nd</sup> & 3<sup>rd</sup>..  
Australian Women's Match Racing Perpetual trophy
- 15.2 Other prizes may be awarded.

### **16 FURTHER INFORMATION**

For further information refer to the event website at <https://www.awmatchracing.com/> or contact

FSC Boating Office – Guy Skinner ph 0407 449 364 e [regatta@fsc.com.au](mailto:regatta@fsc.com.au)



## **ADDENDUM A**

### **SUPPORT PERSON VESSELS [DP]**

Support Teams, including all Support Persons, Coaches, Team Leaders and their vessels, shall comply with the following:

1. All vessels shall be registered with the OA via the link supplied on acceptance of your entry.
2. All vessels will be required to comply with local marine legislation. Local marine regulations specify the safety equipment to be carried. A copy of the regulations is available at:  
  
<https://www.transport.wa.gov.au/imagine/boating-safety.asp>
3. All vessels shall only be moored in the location as directed by a FSC representative.
4. All vessels shall stay outside areas where boats are racing from the time of the preparatory signal for the first start until all boats have finished or retired or the Race Committee signals a postponement, general recall or abandonment. All Vessels shall keep a minimum of 100 metres to leeward of the start line and its extension and more than 100 metres clear of any racing boat or mark of the course.
5. All vessels shall have a current boat insurance policy with a minimum cover of AUD \$10 million.
6. All skippers and their crews shall wear a personal flotation device securely fastened at all times when afloat.
7. All vessels will be required to assist in the event of an emergency as directed by the Race Management Team.
8. All vessels shall have a working VHF radio and maintain a listening watch on the nominated VHF Channel/s announced at the Volunteers Briefing.
9. All skippers shall:
  - a) attend the daily Volunteers Briefing with the Race Management Team.
  - b) wear an engine kill cord/safety lanyard or automatic engine immobilizer.
  - c) hold a current RST or equivalent powerboat licence.
10. The penalty for failing to comply with the above requirements may, after protest, be the disqualification of all competing boats associated with the infringing vessel.

## **The following information does not form part of the NOR**

### **WEATHER**

Fremantle is known for the 'Fremantle Doctor' that typically arrives around midday and builds typically to 15-25 knots during the afternoon.

Mornings are typically easterlies, ranging from the hot north east from a high sitting in the bight to cooler south easterlies which are the trade winds or global winds for the region.

Typical wind roses for 9 am and 3 pm are attached.

Wind observations are reported at Fish Rocks, Garden Island, Rottnest Island and Swanbourne on most apps like Seabreeze, Predict Wind and Windy.



WindRose.9amJan.  
pdf



WindRose.3pmJan.  
pdf

### **ACCOMODATION**

[AirBNB](#)

[Stayz](#)

[The Esplanade](#)

### **EMERGENCY CONTACTS**

**Local emergency services:**

- 000 or 112

**Regatta Emergency Contacts:**

- Race Officer Glenn Porter
- Regatta coordinator Guy Skinner: 0407449364

### **OTHER THINGS TO DO**

#### **Day Trip to Rottnest Island: Any Day**

Tick off your bucket list by spotting a world-famous quokka or travel the network of bike paths and walking trails under your own steam. Explore underwater marine sanctuaries snorkelling at iconic beaches like Little Salmon Bay and during the whale watching season from September to December, get up close with migrating humpback and southern right whales as they linger in the calm waters around the island.

The ferry terminal is also a 30-minute walk away from the Sailing Club

[\[Book online here.\]](#)

#### **Republic Of Fremantle Gin Tour & Taste**

A guided tour of the Distillery, Tastings of the flagship range, our Signature Vodka, Aromatic Gin and Full Bodied Gin plus, taste the wine used to create our unique spirit. Finish with a complimentary drink at the bar – your choice of Vodka Soda or Gin & Tonic

[\[Book online here.\]](#)

#### **Fremantle Prison Tour: Any Day**

Tour of Fremantle Prison, one of Western Australia's most fascinating and significant cultural attractions. Find out why almost 10,000 men were transported from Great Britain and Ireland, how they built their own prison and helped shape the future of Western Australia.

[\[Book online here.\]](#)

### **TRANSPORT**

**Car Hire**

If you wish to get out and about and enjoy the sights of Fremantle, below are your nearest car hire facilities:

- **Budget Car and Truck Rental Fremantle**  
103 Hampton Road, Fremantle, WA 6162

**Bike Hire** – If you wish to get active during the Fremantle stopover, why not hire a bike to see the sights:

**South Beach Cycles**

408 South Terrace, South Fremantle WA 6162  
(08) 9335 4408

**Other Option – Free Bike Hire Service**

The City of Fremantle's Free Wheeling Fremantle initiative, is a free bike hire service for a refundable deposit suitable for adults and teens.

You can use the bikes anywhere in the Fremantle area, allowing you to explore the city at your own leisurely pace.

Free bike hire is available from Monday to Friday 9am–4 pm, Saturday 9am–3 pm and Sunday and public holidays: 10am–3 pm.

Bikes are available from the Fremantle Visitor Centre.

<https://www.fremantle.wa.gov.au/visit/getting-around/cycling>

**Taxis** – Many of the amenities in Fremantle can be reached on foot, however, please see below the local taxi contact should this be your preference: You can also use Uber or Didi.

**Swan Taxis**

Tel: +61 8 13 13 30

**Plan your journey (Maps)** - <https://www.yourmove.org.au/journey-planner/>

## TOURIST INFORMATION

- **Website:** [www.visitfremantle.com.au](http://www.visitfremantle.com.au)
- **Guidebook:** [Guide Book](#)
- **Top 3 things to do:**
  - Visit Fremantle Prison – one of Western Australia’s premier tourist attractions and the only World Heritage listed building in the state
  - Take a trip to Rottnest Island and meet the happiest animal ever – the Quokka
  - Take a trip to the Little Creatures brewery and sample the local regional delights
- **Foodie heaven:**
  - Finding it hard to make a decision of what to eat in Fremantle? Why not take one of the Fremantle Food Tours?
  - Visit Fremantle Markets, home to some of the best food in the city, open Friday to Sunday 0800 -1800
  - Growers Green Market – Bruce Lee Reserve, Beaconsfield. 0800 - 1200
  - One thing you must try when in Fremantle is the Margaret River Cheese!
- **FOMO Freo** - <https://fomofreo.com.au/>  
**Kings Square, Fremantle**
  - FOMO is a blend of art, architecture, culture, retail & dining, all under one roof.
- **WA Maritime Museum** – <https://visit.museum.wa.gov.au/maritime>  
Victoria Quay Road, Fremantle WA 6160
- **Alchemy Sauna – Port Beach**
  - <https://alchemysaunas.com.au/> - BOOKINGS ARE REQUIRED

## GENERAL INFORMATION

### Showers & Toilets

All crew facilities (showers and toilets) are located in the Fremantle Sailing Club [address above]

- 24hr member access to the main bathroom facilities situated at the northern side of the Clubhouse.

### Laundry

The nearest laundry service is located at the Fremantle Sailing Club, this facility is self-service. Card payment is required.

- Opening Hours: Mon – Sun 24/7

### Local Supermarkets

There are a number of supermarkets near Fremantle Sailing Club.

- IGA South Fremantle, 195 Hampton Road, WA 6162
- Peaches, 195 Hampton Road, WA 6162
- Woolworths, 303 Hampton Road, WA 6162

### WiFi

There is Wi-Fi available at FSC. Please visit the reception for the most up to date password.

- Wifi: FSC Guest
- Password: FSC2015!